



Herre single A

Pulje 1

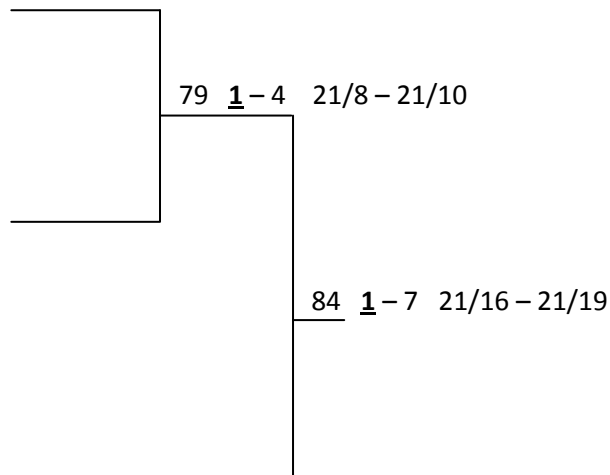
1. Mikkel J	1-2	1	21/16 – 21/11
2. Malle	2-3	14	19/21 – 21/9 – 21/23
3. Uffe	1-3	42	21/10 – 21/13

Pulje 2

4. Jesper S	4-5	2	21/17 – 21/18
5. Jesper C	5-6	15	19/21 – 21/8 – 21/14
6. Jesper K	4-6	43	22/20 – 21/15

Pulje 3

7. Madsen	7-8	3	21/5 – 21/7
8. Lars Top	9-10	4	22/24 – 21/14 – 17/21
9. Jan	7-9	16	21/15 – 21/13
10. Simon	8-10	17	21/10 – 21/9
	7-10	44	22/20 – 14/21 – 22/20
	8-9	45	25/23 – 21/17



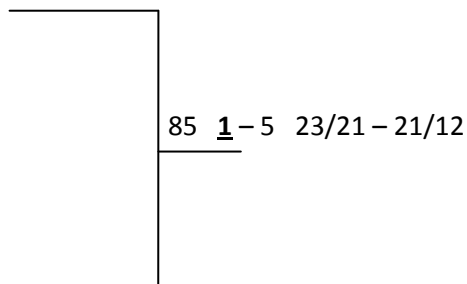
Herre double A

Pulje 1

1. Mads Ø/Mikkel J	1-2	27	21/18 – 21/17
2. Simon A/Peter N	3-4	28	21/18 – 21/12
3. Ken/Jesper C	1-3	34	21/17 – 21/9
4. Troels/Jesper S	2-4	35	21/15 – 21/17
	1-4	54	21/12 – 12/21 – 21/14
	2-3	55	25/27 – 22/20 – 14/21

Pulje 2

5. Uffe/Madsen	5-6	29	21/16 – 21/10
6. Jan/Jesper K	6-7	36	15/21 – 13/21
7. Malle/Hammer	5-7	56	21/14 – 21/12

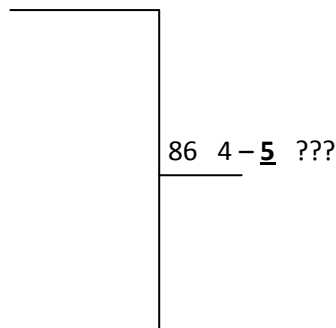




Mixed double A

Pulje 1

1. Iben/Hammer	1-2	61	15/21 – 21/17 – 21/16
2. Jeanette/Simon A	3-4	62	21/16 – 14/21 – 21/18
3. Nanna/Jesper S	1-3	67	15/21 – 14/21
<u>4. Cecilie/Uffe</u>	2-4	68	17/21 – 12/21
	1-4	73	17/21 – 12/21
	2-3	74	16/21 – 23/21 – 21/19



Pulje 2

<u>5. Mette/Mads Ø</u>	5-6	63	21/10 – 21/14
6. Mia/Malle	7-8	64	20/22 – 21/17
7. Birgitte/Troels	5-7	69	21/19 – 21/17
8. Stine A/Madsen	6-8	70	21/19 – 11/21 – 21/19
	5-8	75	14/21 – 21/17 – 21/18
	6-7	76	17/21 – 17/21

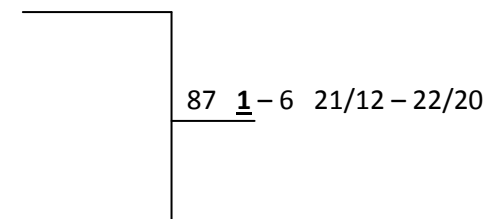
Dame double A

1. Nanna/Cecilie	1-2	30	21/11 – 21/16
2. Stine A/Jeanette	3-4	31	19/21 – 14/21
3. Mia/Line	1-3	37	21/8 – 21/10
<u>4. Birgitte/Mette O</u>	2-4	38	8/21 – 14/21
	1-4	57	16/21 – 8/21
	2-3	58	21/16 – 21/16

Dame single A

Pulje 1

<u>1. Birgitte</u>	1-2	5	21/16 – 21/8
2. Mette O	2-3	18	21/16 – 19/21 – 21/23
3. Iben	1-3	46	21/10 – 21/8



Pulje 2

4. Nanna	4-5	6	19/21 – 21/13 – 21/14
5. Jeanette	5-6	19	9/21 – 19/21
<u>6. Cecilie</u>	4-6	47	19/21 – 19/21



Herre single B

Pulje 1

1. Sofus	1-2	7	26/24 – 22/20
2. Søren B	2-3	20	4/21 – 23/21 – 11/21
<u>3.</u> Flemming	1-3	48	14/21 – 12/21

Pulje 2

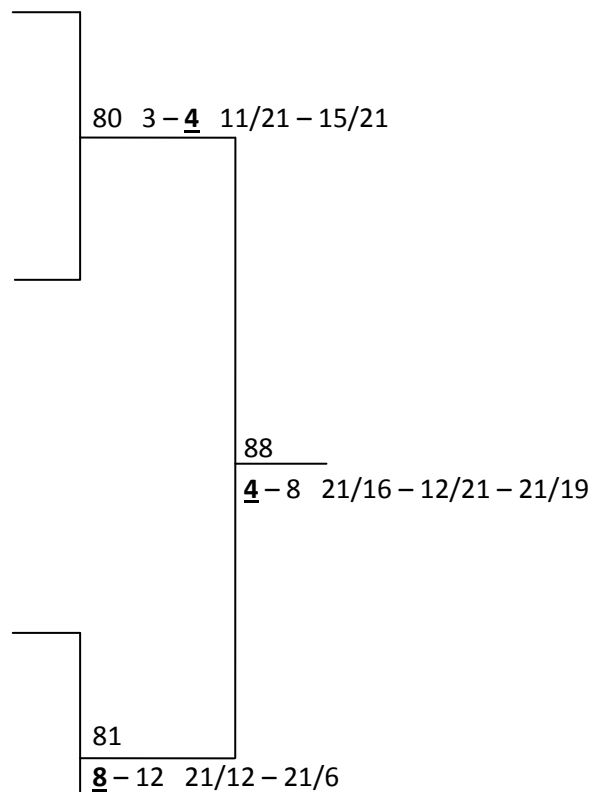
<u>4. Steffen</u>	4-5	8	21/3 – 21/1
5. Martin K	6-7	9	21/11 – 17/21 – 19/21
6. Martin G	4-6	21	21/10 – 21/10
7. Simon L	5-7	22	
	4-7	49	23/21 – 21/9
	5-6	50	

Pulje 3

<u>8.</u> Mikkel D	8-9	10	21/5 – 21/13
9. Christian	10-11	11	11/21 – 16/21
10. Mini	8-10	23	17/21 – 16/21
11. Morten	9-11	24	5/21 – W.O.
	8-11	51	21/19 – 21/17
	9-10	52	

Pulje 4

<u>12.</u> Peter N	12-13	12	21/17 – 21/7
13. Nikolaj	13-14	25	11/21 – 17/21
14. Ken	12-14	53	13/21 – 21/9 – 21/16





Herre double B

Pulje 1

<u>1.</u> Flemming/Steffen	1-2	32	
<u>2.</u> Andreas/Stefan	2-3	39	
3. Mini/Morten	1-3	59	21/17 – 21/16

Pulje 2

<u>4.</u> Mikkel D/Kamp	4-5	33	21/17 – 21/9
5. Nikolaj/Søren B	5-6	40	21/17 – 21/16
6. Simon L/Martin G	4-6	60	21/12 – 21/11

Semifinaler indføres:

Vinder af pulje 1 – 2'er i pulje 2

Vinder af pulje 2 – 2'er i pulje 1

<u>1.</u> Flemming/Steffen	1 – 2	21/10 – 21/10	
2. Simon L/Martin G			
3. Mini/Morten	3 – 4	18/21 – 16/21	
<u>4. Mikkel D/Kamp</u>			1 – <u>4</u> 21/18 – 14/21 – 18/21

Dame double B

1. Stine W/Rikke	1-2	13	21/2 – 21/3
2. Lea/Tanja	2-3	26	21/3 – 21/2
<u>3. Rina/Mette H O</u>	1-3	41	21/9 – 21/16

Mixed double B

<u>1. Mette H O/Morten</u>	1-2	65	21/10 – 21/9
2. Stine W/Flemming	3-4	66	14/21 – 21/16 – 15/21
3. Rikke/Kamp	1-5	71	21/5 – 21/7
4. Rina/Sofus	2-3	72	14/21 – 21/13 – 21/14
5. Tanja/Nikolaj	4-5	77	21/8 – 21/6
	1-3	78	21/12 – 21/14
	2-4	82	17/21 – 10/21
	3-5	83	21/5 – 21/7
	1-4	90	21/18 – 21/13
	2-5	91	21/10 – 21/11